

COACHROOF TOP 3/8" THICK. LIGHT WOOD INSULATION COATED WITH FIBRE GLASS ON TOP & BOTTOM.

3" DIAM. CONVL VENT. (P. & S.)

F.W. TANK SK (NOT TO SC)

PUSH HANDLE

SLIDING MATCH

HINGED MATCH

SHEET WINCH (P. & S.)

FIXED WINDOW

FIXED WINDOW

2-1/2" x 1/2" x 1/8" GALVO STEEL ANGLE

OPEN PORT WINDOW

FIXED WINDOW

TOP OF DECK AT SIDE

4' 5"

15 1/4"

SHELF ?

SHELF ?

DISH

LOCKER

SHELF

FIBRE GLASS COCKPIT ?

OIL FUEL TANK

H.W. STERN POST

MAIN ENGINE

STEP TO BE REMOVABLE

GALLEY BOX

SINK

DRAWER

LOCKER

H.W. CHOCK

FIBRE GLASS LONGITUDINAL FRAMING

18 1/2"

CABIN SOLE 3/4" THICK TEAK ?

STORAGE

FRESH WATER

12"

CABIN SOLE 3/4" THICK TEAK ?

BALLAST TO BE MATTED (1~ LAYER OF 2 OZS. WEIGHT MAT OVER & CONNECTED TO HALL.)

BALLAST WEIGHT = 2464 LBS. APPROX. CAST IRON BLOCKS & CEMENT MIXTURE

FLOOR 1/2" THICK. MARINE PLYWOOD

FLOOR OF A WEIG

6' 3"

3' 1 1/2"

7"

2' 6 1/2"

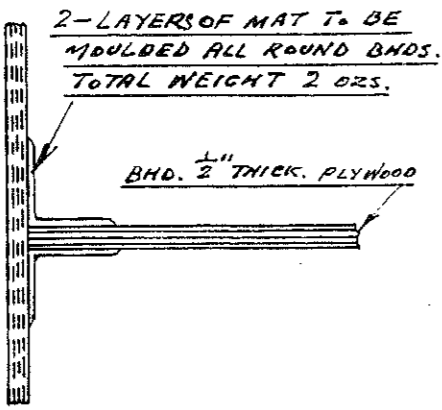
2' 0"

TOILET PARTITION

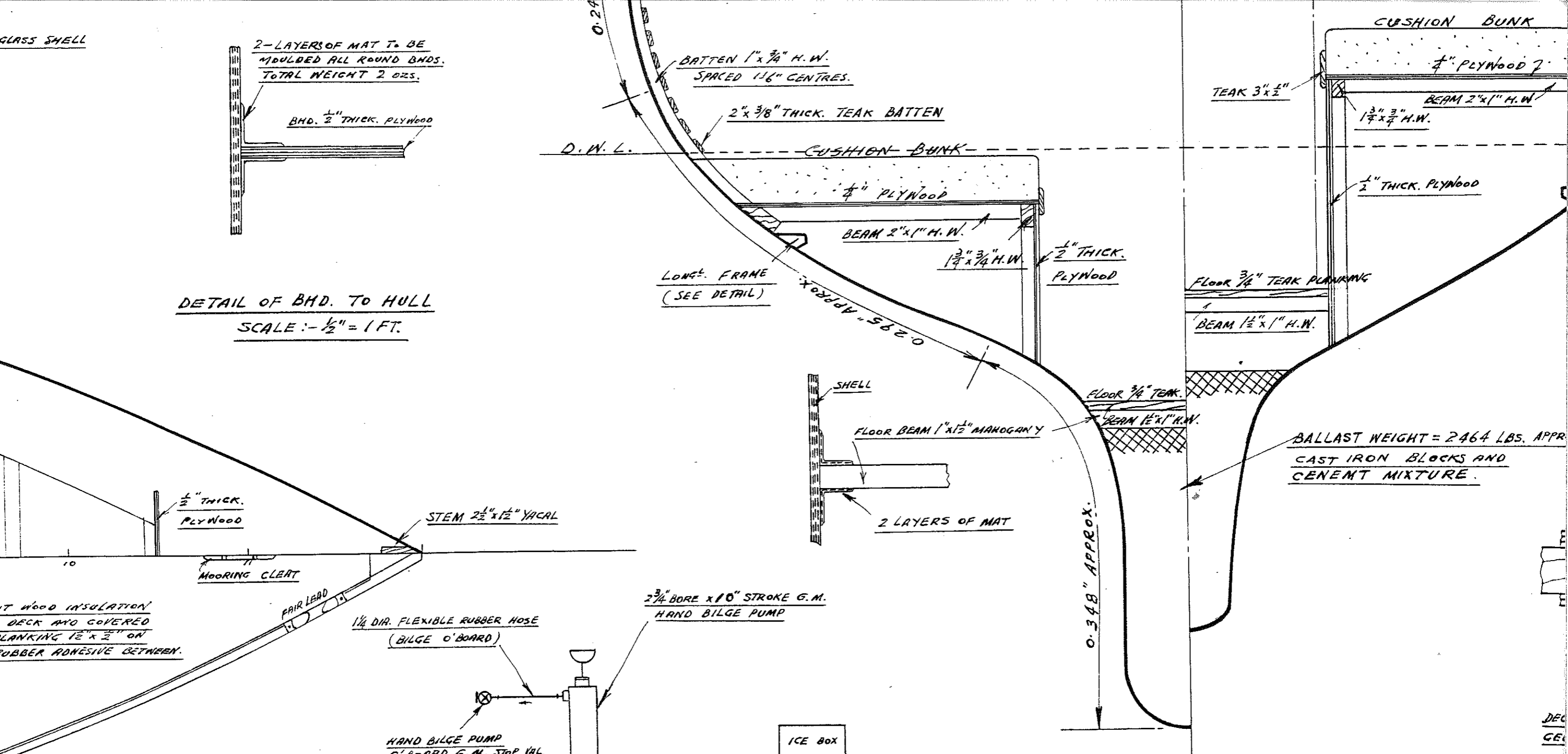
DETAIL OF FLOOR

SCALE: - 3"

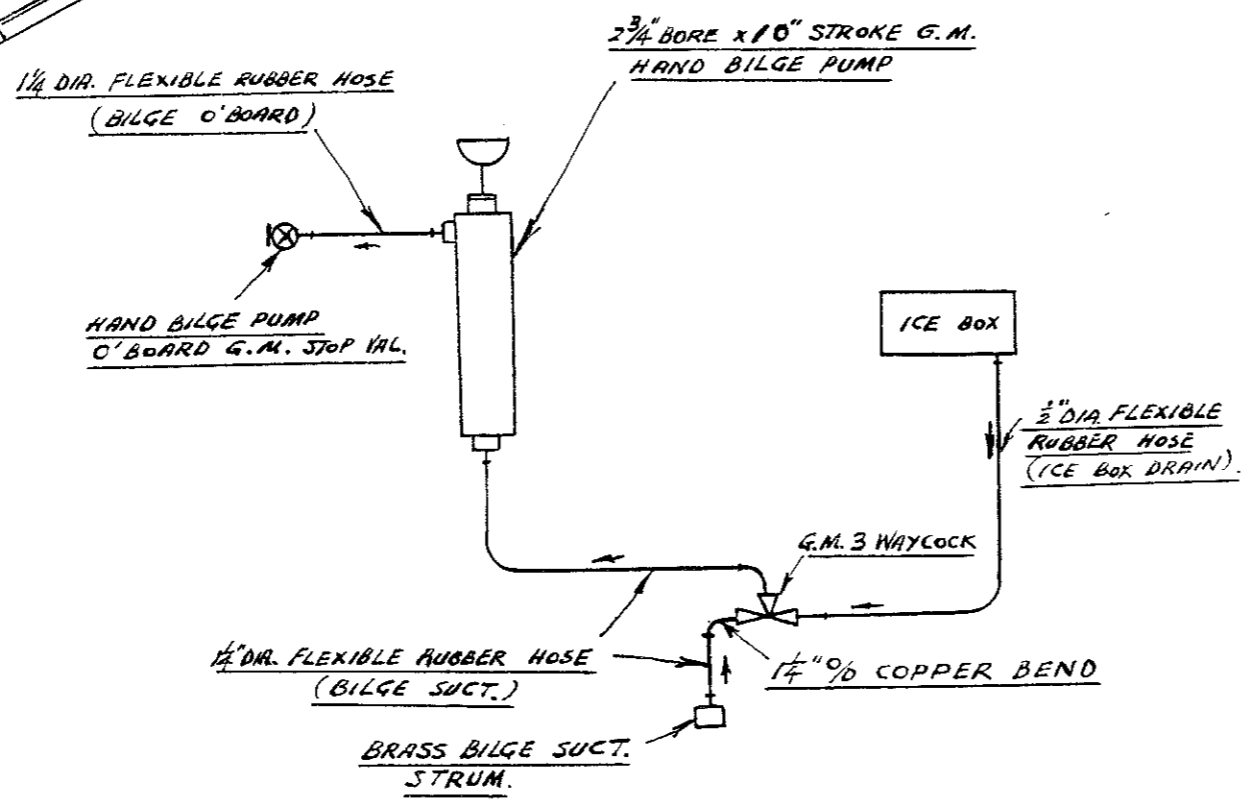
GLASS SHELL



DETAIL OF BHD. TO HULL
SCALE :- $\frac{1}{2}$ " = 1 FT.



MIDSHIP SECTION
SCALE :- $\frac{1}{2}$ " = 1 FT.



BILGE PUMPING DIAGRAM